

# WORLDVUE UPGRADES BEST WESTERN PROPERTY WITH CAT6

## THE UPGRADE

Technology evolves rapidly, and eventually, older equipment reaches its end-of-support stage. For Best Western Hotels, this included the Extreme T5 ADSL Solution and related solutions under the Motorola and Zebra brand names.

At this point, the only way to fix down equipment is to add backdated support, which can be costly depending on how many items need support and for how long they need to be backdated.

The Best Western Socorro Hotel & Suites was among many informed of the urgent need to upgrade their systems. As their trusted technology provider, WorldVue was called in to address the challenge.

## THE INSTALLATION

Best Western Socorro needed to avoid the risks of unsupported technology, particularly the Extreme T5 ADSL system. WorldVue recommended a strategic upgrade to a more robust infrastructure, replacing the old system with modern CAT6 Ethernet cabling.

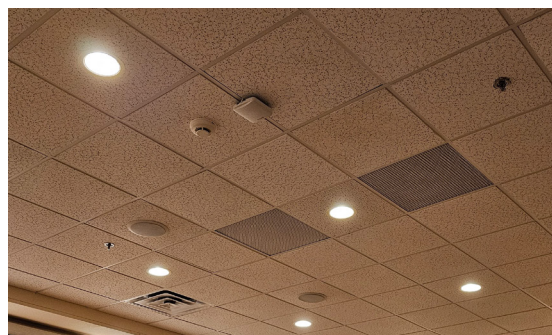
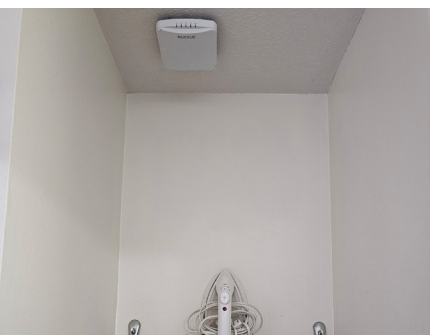
## THE PROPERTY

- 120 Rooms
- Business Center
- Fitness Center
- Meeting Event Space
- Pool
- Hot Tub



The installation was very smooth. The installers (Comptons) are both very professional and knowledgeable and they handled the installation as well as switch over seamlessly. We have not had any complaints, and everything is working great.

**Erica Guerra** | General Manager  
Best Western Socorro Hotel & Suites



## THE INSTALLATION (CONT.)

The installation process was no small feat. The hotel's existing setup involved T5 systems running over phone lines, which required careful removal. WorldVue's team installed new CAT6 cabling, running it from the attic down to the rooms on the 2nd and 1st floors. In a property with exterior entrances, this meant navigating tight spaces and installing access points (APs) in the ceilings to ensure seamless connectivity throughout the hotel.

Copper cabling, such as CAT6/6A Ethernet, offers a cost-effective solution for many properties. While it may require replacement more frequently than fiber optics, it provides faster speeds than older cabling systems or wireless alternatives. This makes it an ideal choice for properties like Best Western Socorro, where a balance of cost, speed, and reliability is crucial.

## THE TECHNOLOGY

CAT6 cabling supports higher data transmission speeds and more robust network performance, making it ideal for applications such as guest Wi-Fi, VoIP, in-room entertainment, and streaming services.

While CAT6 provides stable speed and capacity for most hotel needs, WorldVue also integrates fiber optics where needed, especially for backbone connections. Fiber optics are known for their abundant bandwidth and long-term scalability, allowing properties to accommodate future technology without the need for extensive retrofitting. This combination delivers a cost-effective solution that supports both current operations and future growth.

## THE RESULT

Best Western Socorro staff and guests now enjoy a more reliable and faster network, reducing the risks associated with outdated equipment. This installation was designed with flexibility in mind. By using CAT6/6A cabling at endpoints like guest rooms and retrofitting with existing infrastructure, WorldVue ensures that even legacy systems can benefit from modern upgrades. This approach maximizes performance while minimizing disruption and cost, giving the Best Western Socorro Hotel & Suites a future-proof network that can handle modern technology demands.



Thanks to all of your hard work, this installation turned out perfect and on time. We could not do this without great support team.

**Mark Barron**  
Computer Barron, LLC.

